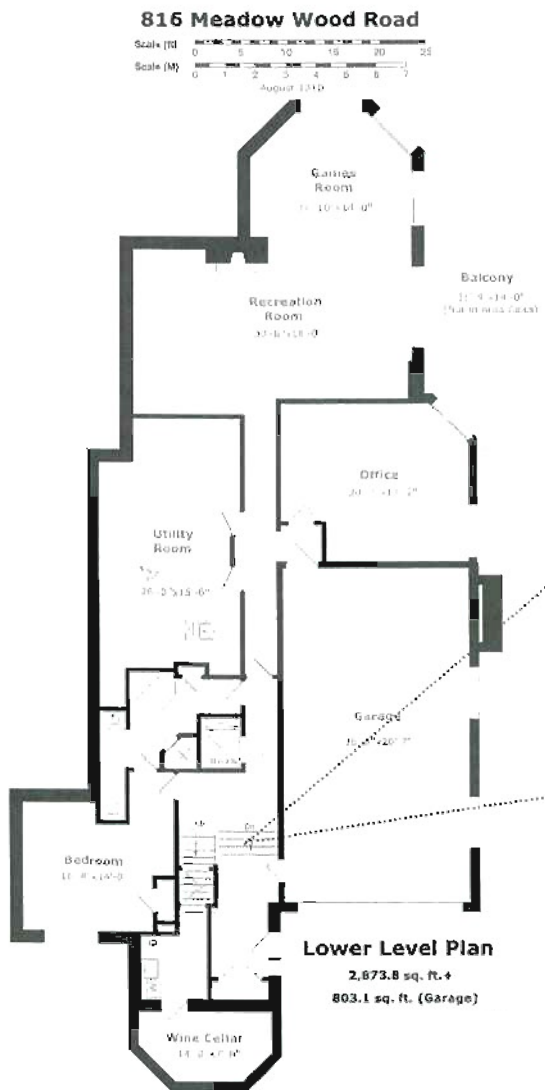


LOWER LEVEL FLOOR PLAN

2,873.8 SQ.FT.



Ramp can be placed
in this location
for wheelchair
accessibility.

MAIN LEVEL FLOOR PLAN

TOTAL SQUARE FOOTAGE: 7,328.6 SQ.FT.
MAIN LEVEL 3,651.7 SQ.FT.

